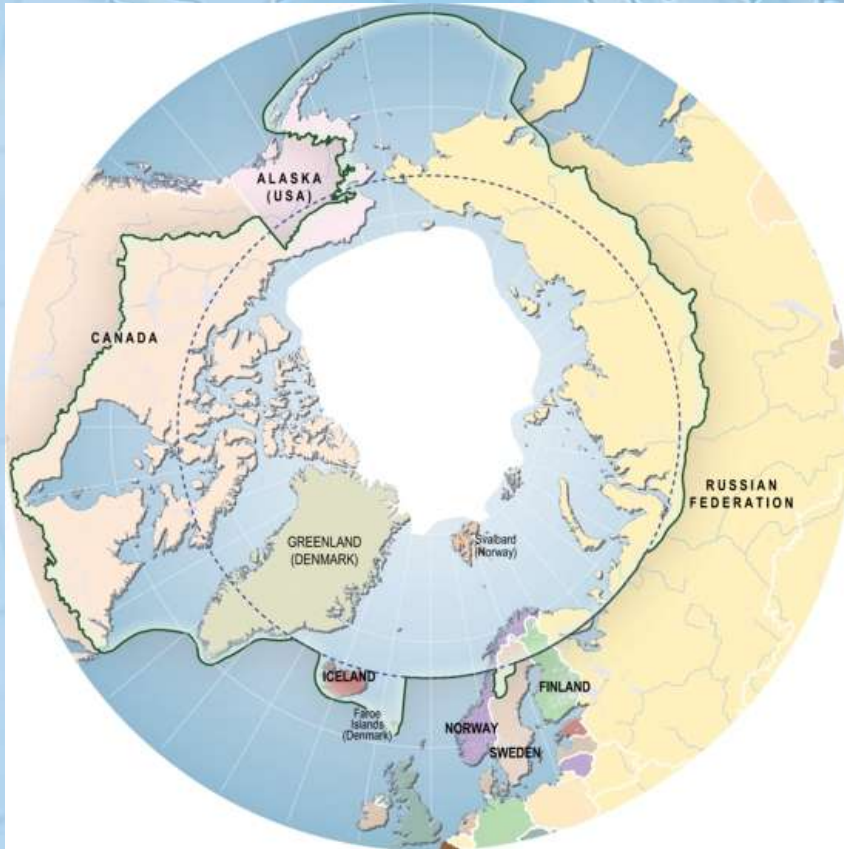


# THE ARCTIC VS THE ANTARCTIC



# THE ARCTIC



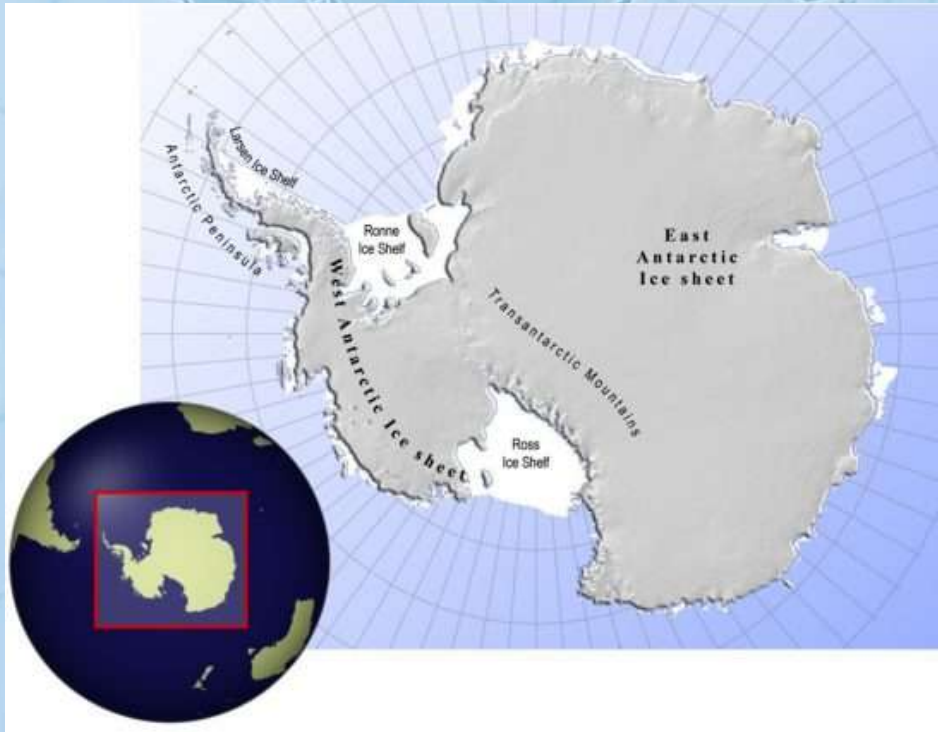
- The Arctic is an ocean with a frozen surface—there is no land underneath it.
- The Arctic circle contains portions of countries including: Canada, Russia, Greenland and the US.
- The North Pole is in the Arctic

# ARCTIC WEATHER

- Average temperature of 3° Fahrenheit.
- Average wind speed 16 mph.
- Winter begins in December.



# THE ANTARCTIC



- The **Antarctic** (opposite) of the Arctic
- It is a continent surrounded by oceans.
- This is where the South Pole is.

# ANTARCTIC WEATHER



- The coldest & windiest place on earth!
- Actually a desert.
- Winter begins in June.
- Average temperature is -55° Fahrenheit.
- Average wind speed 57 mph!

# WHAT DO THESE FREEZING OPPOSITES HAVE IN COMMON?

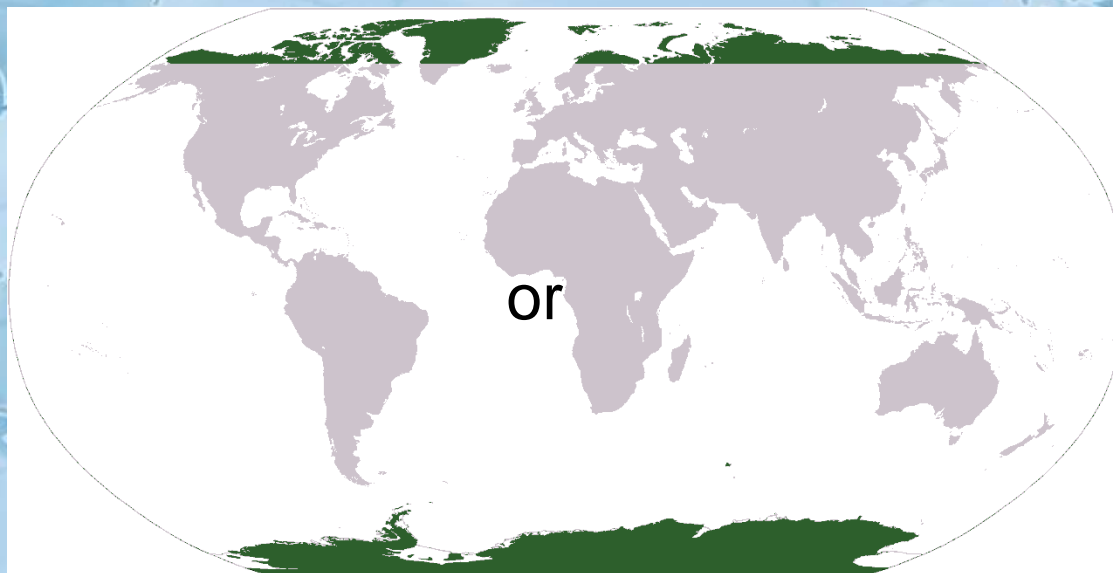


Midday in Winter, Antarctica

- Both experience 6 months of darkness every year, followed by 6 months of light!
- When it is dark at the top of the world, it is light at the bottom.
- Winter ice sheets are shrinking in both places.

# WHERE DO YOU THINK MORE PEOPLE LIVE?

The Arctic



Antarctic?

# THE ARCTIC!



The Inuit, Inupiat and Yupik  
all live in the Arctic.

# HOW MANY PEOPLE LIVE IN ANTARCTICA?

It is much too cold for people to live here permanently. Scientists and vacationers do visit though!



# ANIMALS THAT LIVE IN THE BOTH PLACES

- There are many animals that live in the Arctic and the Antarctic, but few that can live in both.
- There are several whale species that live in the Arctic waters and Antarctica's Seas.

# BLUE WHALE

**ENDANGERED**



- Is the largest animal to ever live on earth. It weighs 200 tons.
- It is the loudest animal on earth- louder than a jet plane.
- At birth it weighs as much as a full grown hippopotamus.

**FUN FACT:** They gain about 200 pounds EVERYDAY for the first year of their life!

# SPERM WHALE

**ENDANGERED**



**FUN FACT:** It is highly probable that Sperm Whales and Giant Squids are mortal enemies!

- They are the largest toothed predator in the world
- They are the Deepest diving whale- reaching depths of up to a mile.
- Only the largest males (bulls) are found in the freezing Antarctic.

# FIN WHALE

ENDANGERED



- They are the second largest animal on earth.
- The Northern Fin lives in the Arctic and the Southern Fin in the Antarctic.

**FUN FACT:** It feeds by opening its mouth while swimming fast, causing it to swallow 18,000 gallons of water in one gulp!

# ORCA "KILLER WHALE"



**FUN FACT:** Killer whales live a LONG time. Between 50 and 80 years!

- They are very powerful predators, known prey on seals and even other whales.
- They hunt in dangerous and cooperative groups with up to 40 members.
- Orcas have never been hunted commercially & there is no threat to their survival.

# HUMPBACK WHALE

**ENDANGERED**



- They spend their summers in either the Arctic or Antarctica, then migrate to the equator for the winter.
- They are known for their complex songs that continue for hours.
- Scientists believe this is their way of communicating with each other.

# RIGHT WHALE

**ENDANGERED**



- They got their name from whalers who determined they were the “Right Whale to hunt”.
- They are now the rarest of all whales.
- The Northern subspecies only has a few hundred individuals left.

# HOW BIG ARE THEY REALLY?



Blue whale



Humpback Whale



Fin Whale



Right Whale



Sperm Whale



Orca

In comparison  
to a human  
diver.

# WHAT ELSE LIVES AT BOTH POLES?

- The Arctic Tern- which migrates from the Arctic to the Antarctic.
- It has the largest migratory pattern of any animal.



**FUN FACT:** because it travels from the Arctic to the Antarctic- it has two summers each year!

Venture



**DO YOU THINK PENGUINS LIVE IN  
THE ARCTIC, ANTARCTICA, OR  
BOTH?**



# JUST ANTARCTICA!



- Penguins only live in the Southern Hemisphere.
- There are 17 total Penguin species, but only 4 breed in Antarctica

# EMPEROR PENGUINS

- They live exclusively in Antarctica AND breed during the winter.
- They have many special adaptations to survive and breed in such a harsh environment.
- They are the largest of all Penguins & have the deepest dives.



**FUN FACT:** Males guard their unhatched eggs for two months, without moving or eating!

# ADELIE PENGUINS



- They are the most common species of penguin on Antarctica.
- They are the most well known, highly social and playful species of penguin.
- They look like they are wearing tuxedos.

**FUN FACT:** they spend their winters out at sea, floating in groups on icebergs!

# CHINSTRAP PENGUINS



- Their signature band of feathers makes these birds look like they are wearing helmets.
- They have a very large population with 750,000 breeding pairs!

**FUN FACT:** They only grow to a maximum size of 27 inches, and ten pounds!

# GENTOO PENGUINS

- They have the widest distribution of any penguin, but are the fewest in numbers.
- Their status is currently “Near Threatened”.
- They have predators in the water, but no threats on land.



**FUN FACT:** they are the fastest swimmers of all the Penguins.

# MORE PENGUINS!

There are also three more species of Penguins that sometimes show up in the Arctic for a visit!



King Penguin



Macaroni  
Penguin



Rockhopper Penguin

# ANTARCTIC SEAL SPECIES



There are 4 species of seals that breed and live in the waters of Antarctica. An Antarctic seal has no land predators, and fewer predators in general than an Arctic Seal.

**YOU WON'T FIND THESE IN  
THE ARCTIC!**

# CRABEATER SEAL

- They are the most abundant species of seal in the world- there are millions of them.
- They eat very little crab, if any at all. Their diet is mainly krill.



**FUN FACT:** They feed at night and spend 8-10 hours doing so!

# LEOPARD SEAL



- They are the most fearsome of all seals.
- They prey on penguins and even other seals.
- Unlike nearly all other seals, they have never been hunted for their coats.

**FUN FACT:** their only predator is the Killer Whale.

# ROSS SEAL



- Is the least common of the Antarctic's seals.
- They look very different from all other seal species.

**FUN FACT:** most mysterious seal- rarely ever seen and very little is known about them.

# WEDDELL SEAL

- They spend most of their lives underneath the Antarctic ice.
- They do not migrate often and adults are usually found very close to where they were born.



**FUN FACT:** they can dive to depths of 600 meters and hold their breath for an hour!



# ARCTIC SEAL SPECIES

There are 6 seal species that live in the Arctic, all of which are different from the species that live in the Antarctic!



**YOU WON'T FIND THESE IN  
ANTARCTICA!**

# BEARDED SEAL

- They are 7½ feet long.
- Their blubber can be as thick as 7cm, and they can weigh up to 750 pounds!
- They are a primary food source for Polar Bears and the Inuit people.



**FUN FACT:** within a week of birth, pups can dive to depths of 200 feet!

## RINGED SEAL



- They are the smallest seal species, and the most common in the Arctic.
- They are very good at making breathing holes in the ice, which allows them to live much further from the ice edge than most seals.

## SPOTTED SEAL



- They have a speckled coat, which gives them their name.
- They are commonly seen in coastal waters when there is very little ice, but during the winter are rarely spotted.

# HOODED SEAL



- The males “hood” is really an enlargement of their nasal cavity and can be inflated to double the apparent size of the seals head.
- Males can also inflate a red membranous balloon out of their left nostril!



## RIBBON SEAL



- These seals are the most distinguishable with their light colored ribbon-like markings.
- They are unwary and easily approached by boat, which makes researchers think they are rarely preyed upon.

## HARP SEAL

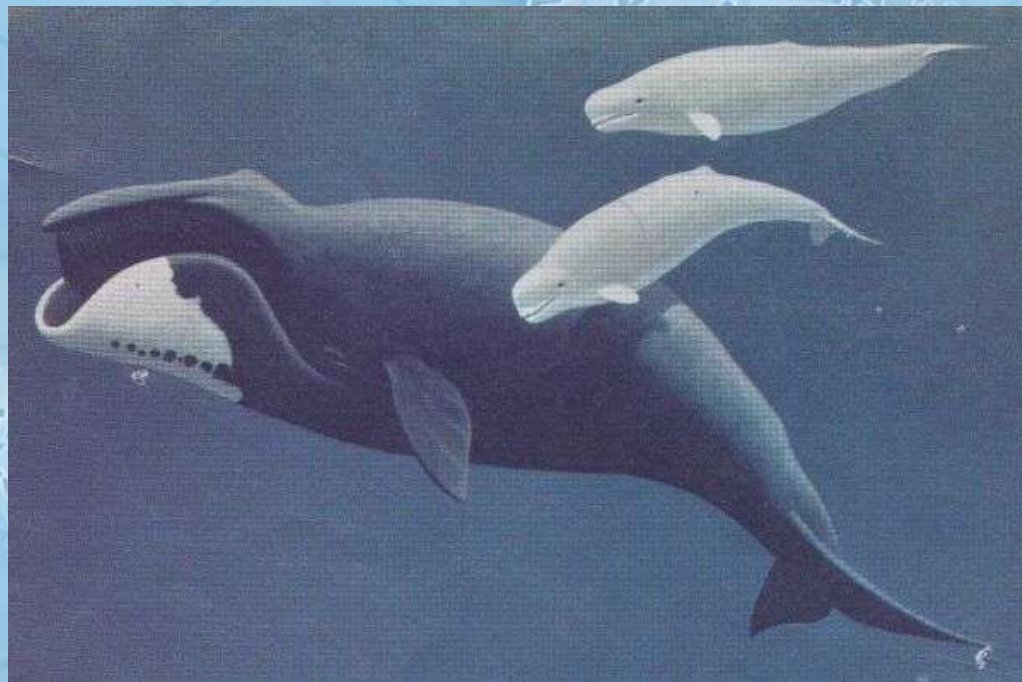
**THREATENED**



- Pups are born with snowy white fur, which is prized by poachers.
- You can learn more about Harp Seals by playing Venture Arctic!

Venture  
ARCTIC

# ARCTIC WHALE SPECIES



**YOU WON'T FIND THEM  
ANYWHERE ELSE!**

# BELUGA WHALE

- It is all white with a melon shaped head.
- They make high-pitched squeaks, clicks and also mimic other sounds.
- Very small for a whale at about 16 feet.



**FUN FACT:** they can change the shape of their head by blowing air into their sinuses!

# NARWHALS

- Found in Arctic coastal waters and rivers.
- Males have one long tooth that sticks out through their upper lip.
- The males tooth can reach 9 feet in length!



**FUN FACT:** Narwhal means “corpse whale” because it often swims belly up and lays motionless.

# BOWHEAD WHALE

- Biggest of the Arctic whales- can weigh up to 10 tons.
- Can break through 4 feet of ice to create breathing holes.
- There are only 11,700 left, but they are not endangered.



**FUN FACT:** their big heads can be up to 40% of their body length!

# HOW BIG ARE THEY?

How big are they compared to human divers?

How big are they compared to the whales that also live in the Antarctic?



# THEY ARE SMALLER!

- Only the largest whales are able to survive in the Antarctic.
- In some cases, only the largest males of a whale species are ever found in the Antarctic.